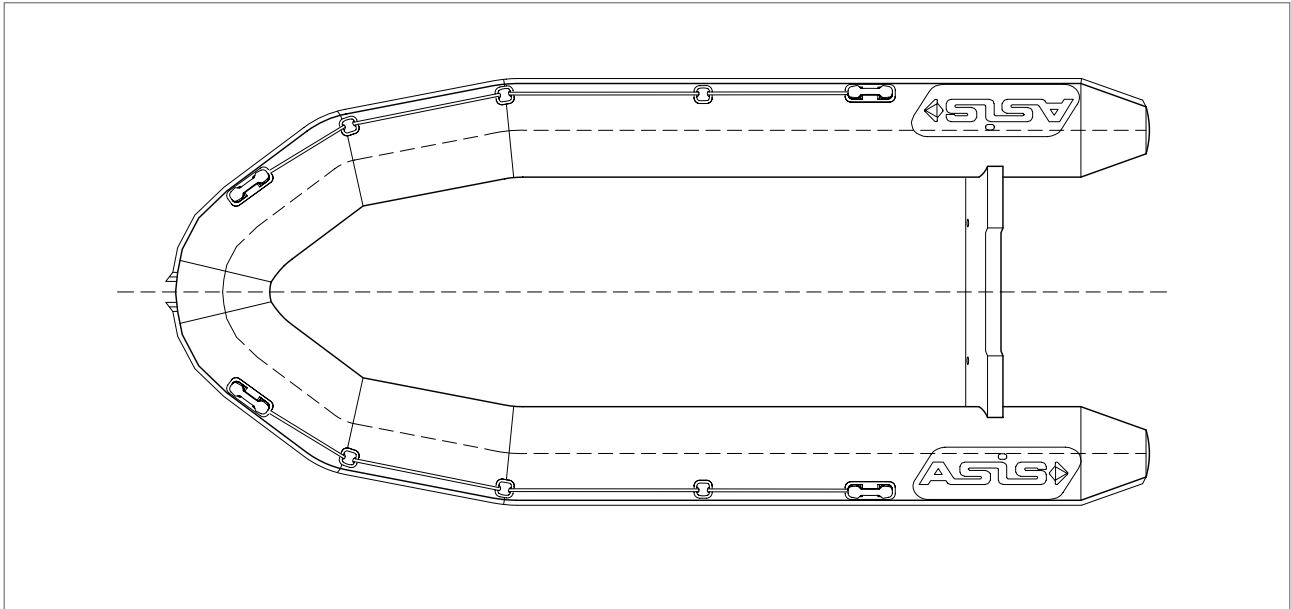


MILITARY BOATS
ASIS RANGER 510

Technical Specifications - Page 1/3

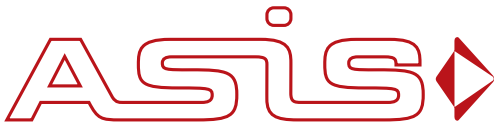


Dimensions	
Overall length	5100mm
Overall Beam	2235mm
Internal Length	3645mm
Internal Beam	1315mm
Weight Empty	140 Kg
Buoyancy Collar diameter	460mm

Capacity	
Max No. of Persons*	12 Persons
Max Payload incl. Fuel*	1200 Kg
Floor Board Usable Area	4.3 m ²
Buoyancy Volume	1723 L

* ISO 6185

Safety / Inflation	
Number of Air Chambers	4 No.
Inflatable Keel	1 No.
Inflation Pressure	0.24 bar / 3.4 PSI
Intercommunication / Inflation Valves	5 No.
Pressure Release Valves	5 No.
Design Category (EC 94/25)	C



MILITARY BOATS
ASIS RANGER 510

Technical Specifications - Page 2/3

Engine Power	
Shaft Length (Single)	Short Shaft (15")
Recommended Power	60 Hp
Maximum Power	80 Hp
Maximum Engine Weight	120 Kg

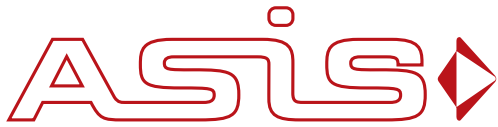
Buoyancy Tube	
Standard Colors	Black and Dark Grey Color
Buoyancy Tube	Hypalon Neoprene 1880 Dtex
Keel Tube	Hypalon Neoprene 1880 Dtex
Floor	Hypalon Neoprene 1880 Dtex

Floor Board	
Roll up floorboard	Reinforced Aluminum Floor Board

Reinforcement	
Rubber Fender Strake all around the tube	2 No.
Flat Rubber Strake Underneath Keel	1 No.

Handling	
Exterior Life Line (Grab Rope)	1 Set
Bow Carrying Handle	1 No.
Interior Handles	6 No
S.S D-ring Patches	6 No

Transom	
Aluminum Heavy Duty Transom	1 No.
Deck Drains	1 No.



MILITARY BOATS
ASIS RANGER 510

Technical Specifications - Page 3/3

Towing	
Bow Large Towing D-ring (S.S Heavy Duty D Ring)	1 No.
Aft Large Towing D-rings	2 No.
Transome Lifting Poiints (U-Bolts)	2 No.

Accessories	
Foot Pump	1 No.
Boat Carrying Bag	1 No.
Repair Kit	1 No.
Aluminum Oars	2 No.