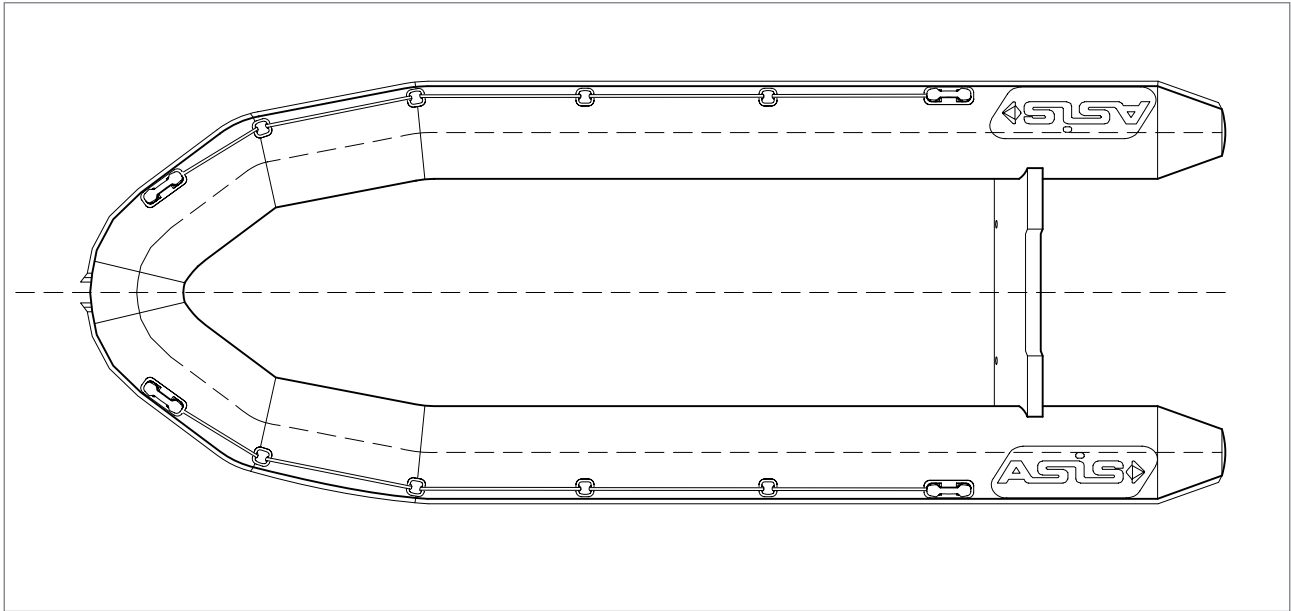


MILITARY BOATS
ASIS RANGER 600

Technical Specifications - Page 1/3

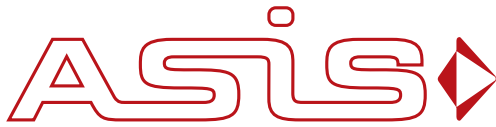


Dimensions	
Overall length	6000mm
Overall Beam	2235mm
Internal Length	4290mm
Internal Beam	1315mm
Weight Empty	165 Kg
Buoyancy Collar diameter	490mm

Capacity	
Max No. of Persons*	14 Persons
Max Payload incl. Fuel*	1750 Kg
Floor Board Usable Area	5.2 m ²
Buoyancy Volume	2296 L

* ISO 6185

Safety / Inflation	
Number of Air Chambers	5 No.
Inflatable Keel	1 No.
Inflation Pressure	0.24 bar / 3.4 PSI
Intercommunication / Inflation Valves	6 No.
Pressure Release Valves	6 No.
Design Category (EC 94/25)	C



MILITARY BOATS
ASIS RANGER 600

Technical Specifications - Page 2/3

Engine Power	
Shaft Length (Single)	Short Shaft (15")
Recommended Power	90 Hp
Maximum Power	100 Hp
Maximum Engine Weight	175 Kg

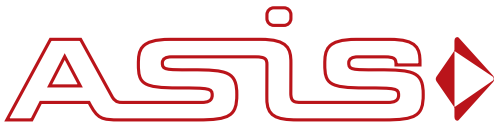
Buoyancy Tube	
Standard Colors	Black and Dark Grey Color
Buoyancy Tube	Hypalon Neoprene 1880 Dtex
Keel Tube	Hypalon Neoprene 1880 Dtex
Floor	Hypalon Neoprene 1880 Dtex

Floor Board	
Roll up floorboard	Reinforced Aluminum Floor Board

Reinforcement	
Rubber Fender Strake all around the tube	2 No.
Flat Rubber Strake Underneath Keel	1 No.

Handling	
Exterior Life Line (Grab Rope)	1 Set
Bow Carrying Handle	1 No.
Interior Handles	6 No.
S.S D-ring Patches	6 No.

Transom	
Aluminum Heavy Duty Transom	1 No.
Deck Drains	1 No.



MILITARY BOATS
ASIS RANGER 600

Technical Specifications - Page 3/3

Towing	
Bow Large Towing D-ring (S.S Heavy Duty D Ring)	1 No.
Aft Large Towing D-rings	2 No.
Transome Lifting Poiints (U-Bolts)	2 No.

Accessories	
Foot Pump	1 No.
Boat Carrying Bag	1 No.
Repair Kit	1 No.
Aluminum Oars	2 No.