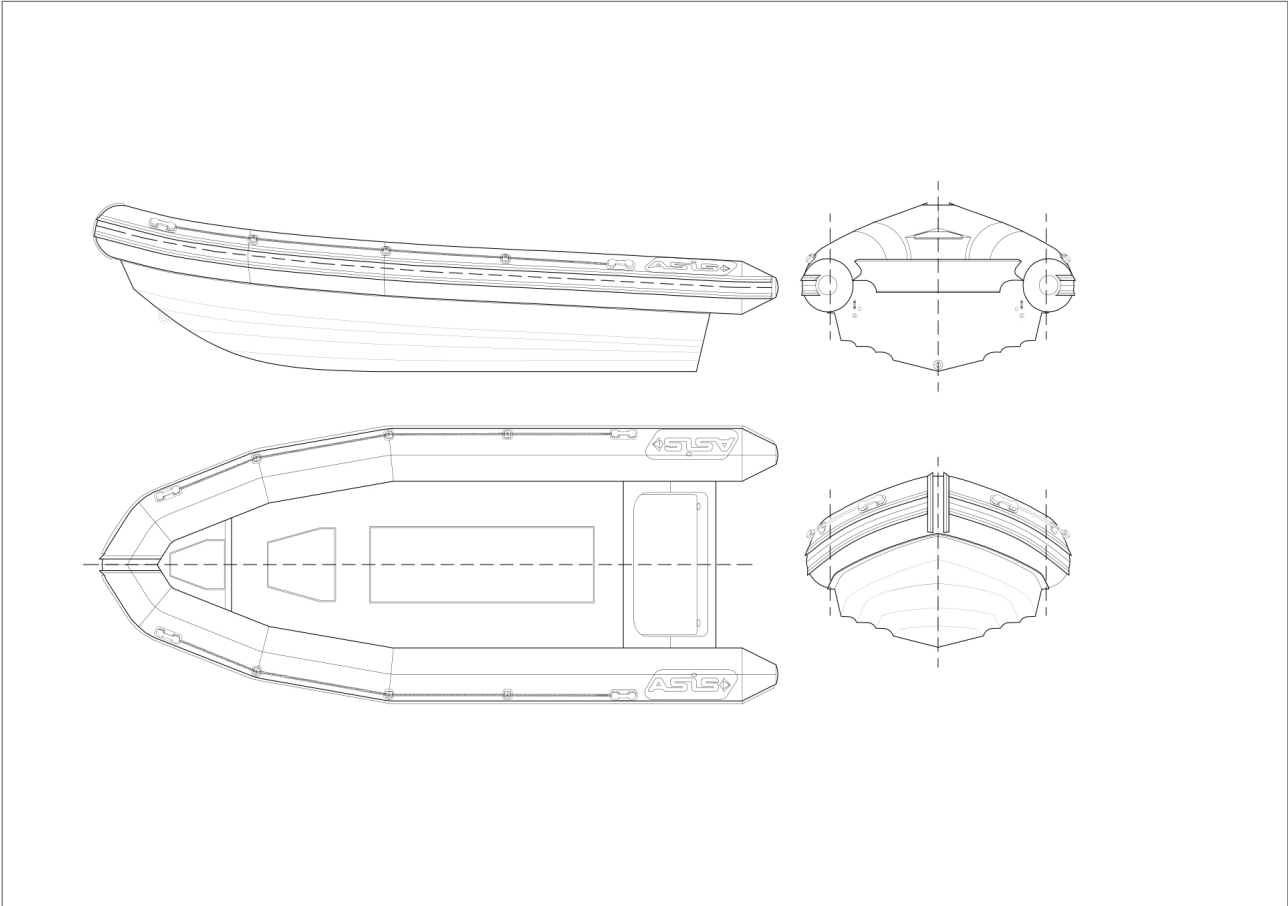


ASIS CUSTOMIZED 6.5

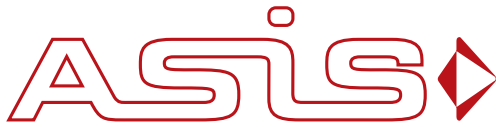
Technical Specifications - Page 1/2



GENERAL	
Hull	GRP or Aluminium
Superstructure	GRP ore Aluminium
Collar	Hypalon 1670 Dtex ; Air or Foam
Description	ASIS Customized 6.5
Classification	Category B
Number of Air Chambers	5 No.

DIMENSIONS	
Length	6430 mm
Beam	2490 mm
Tube Dia	480 mm
Total Weight (Empty Boat)	732 Kg
Displacement (Maximum Payload)	1700 Kg

* ISO 6185



ASIS CUSTOMIZED 6.5

Technical Specifications - Page 2/2

CAPACITIES	
Fuel Tank (Maximum Capacity)	350 L
Fresh Water	Optional
Waste Water	NA
Number of Passenger	9

ELECTRICAL	
Power Supply	12 V Electric Supply
Generator	Optional

PROPULSION	
Recommended Power (HP)	115 HP
Propulsion	Outboard / Inboard
Maximum Power (HP)	300 HP

NAVIGATION & COMMUNICATIONS	
As per the customer's requirements	